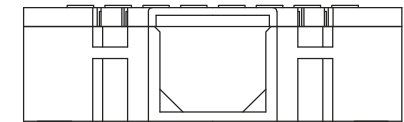
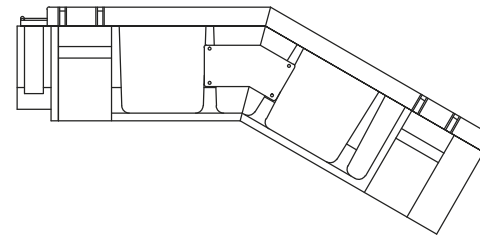
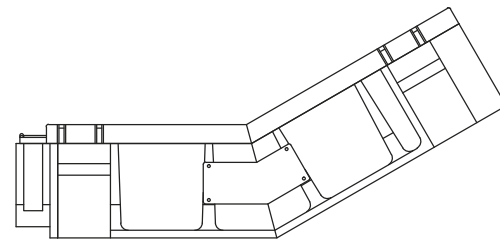
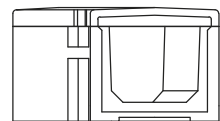
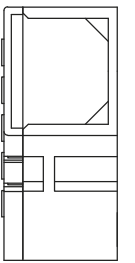
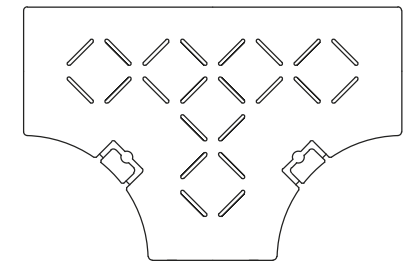
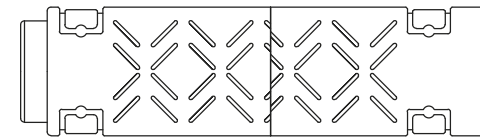
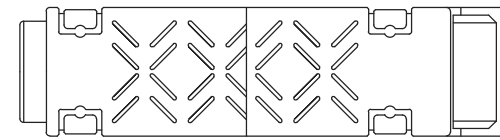
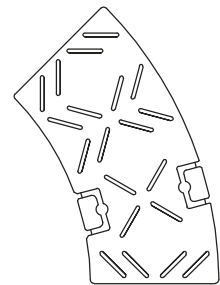


SIZE120 - Straight Trough
(GT120-02)

SIZE120 - Multiple-hole Type
(GT-120-03)



SIZE120 - 45-Degree Angle Trough
(GT-120-04)

SIZE120 - Gradient Trough (up)
(GT-120-05)

SIZE120 - Gradient Trough (down)
(GT-120-06)

SIZE120 - T-Junction
(GT-120-07)

Rev	Revision Note	By	Checked	Approved	Date

Client

Project
SERIES 120
FULL 120 RANGE

Status
Scale
1:5 @A3



TTS
Trough-Tec Systems Ltd,
Bennethorpe,
Doncaster, DN2 6AA

GENERAL
ARRANGEMENT
Dwg No GT-120-01